

1.4.1 QnM Institution obtains feedback on the academic performance and ambience of the institution from various stakeholders, such as Students, Faculties, Employers, Alumni etc. and action taken report on the feedback is made available on institutional website

Link for Supporting Document

S.NO	DESCRIPTION	LINK
1	Certificate Of Head Of Institution, Feedback Process	
2	Sampled Filled Feedback Forms of Students/Alumni/Employer/Faculty	
3	Analysis of Feedback Collected	
4	Action Taken Report	

TO WHOM SO EVER IT MAY CONCERN

This is to certify that IET Bhaddal affiliated to IKGPTU has adopted a feedback system for Enhancement of academic Performance and ambience of Institute by taking suggestions from stakeholders of each Program .The Feedback has been taken from following stakes Holder

- 1 Student
- 2 Faculties
- 3 Alumni
- 4 Employers

Based on Feedback analysis, Action Taken Report is Prepared and Corrective Measures has been Implemented. This eventually helps to fine tune and teaching learning process and Uplift academic facilities. The Feedback Link, Analysis Report and Action Taken Report are available In our website.

STAKEHOLDER FEEDBACK PROCESS

The Institute of Engineering and Technology is constantly working to enhance its atmosphere and offer high-quality instruction. In order to do this, the institution has put in place a feedback process that solicits opinions from a variety of stakeholders, including employers, faculty, alumni, and students. Every stakeholder receives a copy of the feedback forms. Following input collection, analysis is conducted and appropriate measures are implemented based on stakeholder ideas.

FEEDBACK MECHANISM

The following feedback process is followed every year. Feedback is taken from the following stakeholders

1. Students
2. Faculty
3. Alumni
4. Employer

Online and offline modes are used to create feedback forms with questions based on curriculum, ambiance, and the teaching-learning process. The forms and links are then distributed to the appropriate stakeholders. There is a deadline for the stakeholders to complete the forms. The following answers must be provided: Excellent, Very good, Good, Fair, and Poor. The heads of the corresponding departments review the input from all parties involved and take the appropriate departmental and college-level steps.

Student Feedback

* Indicates required question

Name *

Programme *

Roll No.

*

Semester

*

Email

*

Why you selected this Programme?* *

Current Industrial scenario is favourable for this programme

Parents made me select this course

Friends/ Sibling is pursuing the same course

School teachers guided for the same

No particular reason

How do you rate the Programme in terms of the curriculum syllabi in different semesters?* *

Excellent

Very Good

Good

Fair

Poor

How do you rate the courses in terms of their relevance to the latest and/or future technologies?* *

Excellent

Very Good

Good

Fair

Poor

How do you rate the quality and relevance of the courses included in the curriculum?* *

Excellent

Very Good

Good

Fair

Poor

How do you rate the quality of teaching during the entire programme?* *

Excellent

Very Good

Good

Fair

Poor

How do you rate the teacher' s approach to your overall development?* *

Excellent

Very Good

Good

Fair

Poor

How do you rate the infrastructure of the classrooms for effective delivery of the lectures?* *

Excellent

Very Good

Good

Fair

Poor

How do you rate the laboratories and other facilities for effective learning?* *

Excellent

Very Good

Good

Fair

Poor

How do you rate the availability of text books and reference books available in the library?* *

Excellent

Very Good

Good

Fair

Poor

How do you rate the transparency of the evaluation system in the institute?* *

Excellent

Very Good

Good

Fair

Poor

How do you rate the fairness of internal evaluation process by the teachers?* *

Excellent

Very Good

Good

Fair

Poor

How do you rate the infrastructure, cleanliness and other facilities in the hostel?* *

Excellent

Very Good

Good

Fair

Poor

How do you rate the quality of food, hygiene maintenance in the mess and cafeterias?* *

Excellent

Very Good

Good

Fair

Poor

How do you rate the institute activities that help in getting jobs and placements?* *

Excellent

Very Good

Good

Fair

Poor

How do you rate the transport facility of the institute?* *

Excellent

Very Good

Good

Fair

Poor

How do you rate the professional environment in institute?* *

Excellent

Very Good

Good

Fair

Poor

How you rate the performance of Department of Student Welfare in the institute?* *

Excellent

Very Good

Good

Fair

Poor

How do you rate the grievance redressal mechanism in the Institute?* *

Excellent

Very Good

Good

Fair

Poor

Any Other?

Faculty Feedback

* Indicates required question

Name

*

Designation *

Department *

Employee ID *

Highest Qualification *

How do you rate the sequence of the courses provided in the curriculum? *

Excellent

Good

Fair

Poor

How do you rate the syllabus of the courses in relation to the competencies expected out of the course? *

Excellent

Good

Fair

Poor

How do you rate the allocation of the credits and contact hours (L-T-P) to the courses?

*

Excellent

Good

Fair

Poor

Rate the courses in terms of extra learning or self-learning considering the design of the courses.

*

Excellent

Good

Fair

Poor

How do you rate the evaluation scheme designed for each of the course? *

Excellent

Good

Fair

Poor

How do you rate the composition of the programme in terms of basic science, Engineering science, Humanities, Discipline core, discipline elective, open elective, project etc.? *

Excellent

Good

Fair

Poor

How do you rate the offering of the electives in terms of their relevance to the specialization streams and technological advancements? *

Excellent

Good

Fair

Poor

How do you rate the relevance of the Text Books and reference books by their International recognition to the courses? *

Excellent

Good

Fair

Poor

Rate the courses in terms of sequence of offering, considering whether the proceeding courses have been covered. *

Excellent

Good

Fair

Poor

How do you rate the extent of courses having LAB components and domain used for designing the experiments for the LAB components? *

Excellent

Good

Fair

Poor

Rate the opportunity extended and Financial aid to participate in Faculty development, Conferences, Workshops etc. *

Excellent

Good

Fair

Poor

How do you rate the infrastructural facilities like cabin, computer, class room etc? *

Excellent

Good

Fair

Poor



Rate the Research environment and Library resources. *

Excellent

Good

Fair

Poor

Rate the working environment such as the relationship with co-workers and superiors, organizational culture etc. *

Excellent

Good

Fair

Poor

How do you rate the Examination system support? *

Excellent

Good

Fair

Poor

How do you rate the professional growth opportunities in terms of knowledge base, pedagogy etc. in the Institute? *

Excellent

Good

Fair

Poor

How do you rate the recreational facilities within the campus? *

Excellent

Good

Fair

Poor

Alumni Feedback Form

Name of Alumni:

*

Father Name:

*

University Roll No.:

*

Branch/ Class:

*

Enrollment Batch:

*

Phone No.: *

Whats App No.: *

Email:

*

Present Status:

*

Present Employer (If working):

Designation:

*



IET BHADDAL

Campus: Bhaddal, PO Mianpur, Distt. Ropar, Punjab-140108 (India)
UGC approved (2f & 12B) | Affiliated to IKG-PTU (Jalandhar)

TECHNICAL
CAMPUS
ROPAR

Income:

*

- How useful are the elective subjects offered, during course of study? *
 - Elective subjects enabled to make my knowledge very stronger
 - Elective subjects enabled to make my knowledge moderately stronger
 - Elective subjects enabled me to get the basic knowledge
 - Elective subjects justified my choice for the selection of courses
- Was there a balance between core subjects and applied subjects in the curriculum? *
 - Good Balance
 - Moderate Balance
 - Need More attention
- Were sufficient teaching hours allocated in the time table for subject/syllabus completion?
 - Yes
 - Not Sure
 - No
- How do you assess the laboratory courses of curriculum including list of experiments and necessary lab facilities were appropriate during your studies? *
 - Number of experiments covering the entire syllabus and the lab were fully equipped
 - Number of experiments covering the important experiments and the lab were fully equipped
 - Number of experiments covering the syllabus only for which the apparatus was available in the lab and the lab, were fully equipped
 - Number of experiments covering the syllabus partially but the infra was available
- Do you agree that internal evaluation during your studies was transparent and fair? *
 - Strongly agree
 - Agree
 - Neutral
 - Disagree
 - Strongly Disagree
- Do you think that department efforts to provide content beyond syllabus were relevant? *
 - Beyond the syllabus relevant were taught
 - Only one topic in most of the subject was taught
 - Only syllabus was covered
 - No efforts were made
- Whether the curriculum you studied fulfilled the Industrial requirements? *
 - Curriculum included the industrial needs
 - Curriculum covered the practical's considered crucial for hands on training in industry
 - Industrial visits enhanced the knowledge about the requirement of industry
 - Only technical part was strengthened

Employer Feedback

Name of Employer: *

Official Mail Id: *

Mobile Number: *

Designation: *

- How do you rate the technical skills & domain expertise of our graduates/Post graduates? *
Excellent
Good
Satisfactory
Poor
- How do you rate communication & interpersonal skills of our graduates? *
Excellent
Good
Satisfactory
Poor
- How do you rate aptitude & problem solving skills of our graduates? *
Excellent
Good
Satisfactory
Poor
- How do you rate the team work efficiency of our graduates? *
Excellent
Good
Satisfactory
Poor
- How do you rate values & ethics of our graduates? *
Excellent
Good
Satisfactory
Poor
- How do you rate the self learning ability of our graduates? *
Excellent
Good
Satisfactory
Poor



IET BHADDAL

Campus: Bhaddal, PO Mianpur, Distt. Ropar, Punjab-140108 (India)
UGC approved (2f & 12B) | Affiliated to IKG-PTU (Jalandhar)

TECHNICAL
CAMPUS
ROPAR

- How do you rate the work ethics of our graduates? *
Excellent
Good
Satisfactory
Poor
- How do you rate the self management skills of our graduates? *
Excellent
Good
Satisfactory
Poor

Students Feedback

IET BHADDAL TECHNICAL CAMPUS, ROPAR

Email

chandankumar9465670@gmail.com

Name

Chandan kumar

Roll no.

2425085

Branch

EE diploma

Semester

1 year

Why you selected this programme ?

- ☐ Current Industrial scenario is favourable for this programme
- ☐ Parents made me select this course
- ☒ Friends/Sibling is pursuing the same course
- ☐ No particular reason
- ☐ School teachers guided for the same

How do you rate the Programme in terms of the curriculum syllabi in different semesters?

- ☐ Excellent
- ☐ Very Good
- ☐ Good
- ☐ Fair
- ☒ Poor

☒ Option 1

☒ Option 1

☒ Option 1

How do you rate the courses in terms of their relevance to the latest and/or future technologies?

- ☐ Excellent
- ☐ Very Good
- ☐ Good
- ☐ Fair
- ☒ Poor

How do you rate the quality and relevance of the courses included in the curriculum?

- ☐ Excellent
- ☐ Very Good
- ☐ Good
- ☐ Fair
- ☒ Poor

How do you rate the quality of teaching during the entire programme?

- ☐ Excellent
- ☐ Very Good
- ☐ Good
- ☐ Fair
- ☒ Poor

How do you rate the teacher`s approach to your overall development?

- ☐ Excellent
- ☐ Very Good
- ☐ Good
- ☐ Fair
- ☒ Poor

How do you rate the infrastructure of the classrooms for effective delivery of the lectures?

- ☐ Excellent
- ☐ Very Good
- ☐ Good
- ☐ Fair
- ☒ Poor

How do you rate the laboratories and other facilities for effective learning?

- ☐ Excellent
- ☐ Very Good
- ☐ Good
- ☐ Fair
- ☒ Poor

How do you rate the availability of text books and reference books available in the library?

- ☐ Excellent
- ☐ Very Good
- ☐ Good
- ☐ Fair
- ☒ Poor

How do you rate the transparency of the evaluation system in the Institute?

- ☐ Excellent
- ☐ Very Good
- ☐ Good
- ☐ Fair
- ☒ Poor

How do you rate the fairness of internal evaluation process by the teachers?

- ☐ Excellent
- ☐ Very good
- ☐ Good
- ☐ Fair
- ☒ Poor

How do you rate the infrastructure, cleanliness and other facilities in the hostel?

- ☐ Excellent
- ☐ Very good
- ☐ Good
- ☐ Fair
- ☒ Poor

How do you rate the quality of food ,hygiene maintenance in the mess and cafeterias?

- ☐ Excellent
- ☐ Very Good'
- ☐ Good
- ☐ Fair
- ☒ Poor

How do you rate the institute activities that help in getting jobs and placements?

- ☐ Excellent
- ☐ Very good
- ☐ Good
- ☒ Fair
- ☐ Poor

How do you rate the services and your interaction with the admin department?

- ☐ Excellent
- ☐ Very Good
- ☐ Good
- ☐ Fair
- ☒ Poor

How do you rate the transport facility of the Institute?

- ☐ Excellent
- ☐ Very Good
- ☒ Good
- ☐ Fair
- ☐ Poor

How do you rate the professional environment in the Institute?

- ☐ Excellent
- ☐ Very good
- ☒ Good
- ☐ Fair
- ☐ Poor

How do you rate the performance of Department of Student Welfare in the Institute?

- ☐ Excellent
- ☐ Very Good
- ☐ Good
- ☒ Fair
- ☐ Poor

How do you rate the grievance redressal mechanism in the Institute?

- ☐ Excellent
- ☐ Very good
- ☐ Good
- ☒ Fair
- ☐ Poor

This form was created inside of IET Bhaddal Technical Campus.

Google Forms

Students Feedback

IET BHADDAL TECHNICAL CAMPUS, ROPAR

Email

Singhj70131@gmail.com

Name

Khushpreet Singh

Roll no.

2425099

Branch

BCA

Semester

1st

Why you selected this programme ?

- ☒ Current Industrial scenario is favourable for this programme
- ☐ Parents made me select this course
- ☐ Friends/Sibling is pursuing the same course
- ☐ No particular reason
- ☐ School teachers guided for the same

How do you rate the Programme in terms of the curriculum syllabi in different semesters?

- ☒ Excellent
- ☐ Very Good
- ☐ Good
- ☐ Fair
- ☐ Poor

☐ Option 1

☐ Option 1

☐ Option 1

How do you rate the courses in terms of their relevance to the latest and/or future technologies?

- ☒ Excellent
- ☐ Very Good
- ☐ Good
- ☐ Fair
- ☐ Poor

How do you rate the quality and relevance of the courses included in the curriculum?

- ☒ Excellent
- ☐ Very Good
- ☐ Good
- ☐ Fair
- ☐ Poor

How do you rate the quality of teaching during the entire programme?

- ☒ Excellent
- ☐ Very Good
- ☐ Good
- ☐ Fair
- ☐ Poor

How do you rate the teacher`s approach to your overall development?

- ☒ Excellent
- ☐ Very Good
- ☐ Good
- ☐ Fair
- ☐ Poor

How do you rate the infrastructure of the classrooms for effective delivery of the lectures?

- ☒ Excellent
- ☐ Very Good
- ☐ Good
- ☐ Fair
- ☐ Poor

How do you rate the laboratories and other facilities for effective learning?

- ☒ Excellent
- ☐ Very Good
- ☐ Good
- ☐ Fair
- ☐ Poor

How do you rate the availability of text books and reference books available in the library?

- ☒ Excellent
- ☐ Very Good
- ☐ Good
- ☐ Fair
- ☐ Poor

How do you rate the transparency of the evaluation system in the Institute?

- ☒ Excellent
- ☐ Very Good
- ☐ Good
- ☐ Fair
- ☐ Poor

How do you rate the fairness of internal evaluation process by the teachers?

- ☒ Excellent
- ☐ Very good
- ☐ Good
- ☐ Fair
- ☐ Poor

How do you rate the infrastructure, cleanliness and other facilities in the hostel?

- ☒ Excellent
- ☐ Very good
- ☐ Good
- ☐ Fair
- ☐ Poor

How do you rate the quality of food ,hygiene maintenance in the mess and cafeterias?

- ☒ Excellent
- ☐ Very Good'
- ☐ Good
- ☐ Fair
- ☐ Poor

How do you rate the institute activities that help in getting jobs and placements?

- ☒ Excellent
- ☐ Very good
- ☐ Good
- ☐ Fair
- ☐ Poor

How do you rate the services and your interaction with the admin department?

- ☒ Excellent
- ☐ Very Good
- ☐ Good
- ☐ Fair
- ☐ Poor

How do you rate the transport facility of the Institute?

- ☒ Excellent
- ☐ Very Good
- ☐ Good
- ☐ Fair
- ☐ Poor

How do you rate the professional environment in the Institute?

- ☒ Excellent
- ☐ Very good
- ☐ Good
- ☐ Fair
- ☐ Poor

How do you rate the performance of Department of Student Welfare in the Institute?

- ☒ Excellent
- ☐ Very Good
- ☐ Good
- ☐ Fair
- ☐ Poor

How do you rate the grievance redressal mechanism in the Institute?

- ☒ Excellent
- ☐ Very good
- ☐ Good
- ☐ Fair
- ☐ Poor

This form was created inside of IET Bhaddal Technical Campus.

Google Forms

Students Feedback

IET BHADDAL TECHNICAL CAMPUS, ROPAR

Email

kirandeepwaraich1322@gmail.com

Name

Kirandeep kaur

Roll no.

2303668

Branch

MBA

Semester

3 rd

Why you selected this programme ?

- ☐ Current Industrial scenario is favourable for this programme
- ☒ Parents made me select this course
- ☐ Friends/Sibling is pursuing the same course
- ☐ No particular reason
- ☐ School teachers guided for the same

How do you rate the Programme in terms of the curriculum syllabi in different semesters?

- ☐ Excellent
- ☒ Very Good
- ☐ Good
- ☐ Fair
- ☐ Poor

☒ Option 1

☐ Option 1

☐ Option 1

How do you rate the courses in terms of their relevance to the latest and/or future technologies?

- ☐ Excellent
- ☒ Very Good
- ☐ Good
- ☐ Fair
- ☐ Poor

How do you rate the quality and relevance of the courses included in the curriculum?

- ☒ Excellent
- ☐ Very Good
- ☐ Good
- ☐ Fair
- ☐ Poor

How do you rate the quality of teaching during the entire programme?

- ☐ Excellent
- ☒ Very Good
- ☐ Good
- ☐ Fair
- ☐ Poor

How do you rate the teacher`s approach to your overall development?

- ☒ Excellent
- ☐ Very Good
- ☐ Good
- ☐ Fair
- ☐ Poor

How do you rate the infrastructure of the classrooms for effective delivery of the lectures?

- ☒ Excellent
- ☐ Very Good
- ☐ Good
- ☐ Fair
- ☐ Poor

How do you rate the laboratories and other facilities for effective learning?

- ☐ Excellent
- ☒ Very Good
- ☐ Good
- ☐ Fair
- ☐ Poor

How do you rate the availability of text books and reference books available in the library?

- ☒ Excellent
- ☐ Very Good
- ☐ Good
- ☐ Fair
- ☐ Poor

How do you rate the transparency of the evaluation system in the Institute?

- ☒ Excellent
- ☐ Very Good
- ☐ Good
- ☐ Fair
- ☐ Poor

How do you rate the fairness of internal evaluation process by the teachers?

- ☐ Excellent
- ☒ Very good
- ☐ Good
- ☐ Fair
- ☐ Poor

How do you rate the infrastructure, cleanliness and other facilities in the hostel?

- ☐ Excellent
- ☒ Very good
- ☐ Good
- ☐ Fair
- ☐ Poor

How do you rate the quality of food ,hygiene maintenance in the mess and cafeterias?

- ☐ Excellent
- ☒ Very Good'
- ☐ Good
- ☐ Fair
- ☐ Poor

How do you rate the institute activities that help in getting jobs and placements?

- ☒ Excellent
- ☐ Very good
- ☐ Good
- ☐ Fair
- ☐ Poor

How do you rate the services and your interaction with the admin department?

- ☒ Excellent
- ☐ Very Good
- ☐ Good
- ☐ Fair
- ☐ Poor

How do you rate the transport facility of the Institute?

- ☐ Excellent
- ☒ Very Good
- ☐ Good
- ☐ Fair
- ☐ Poor

How do you rate the professional environment in the Institute?

- ☒ Excellent
- ☐ Very good
- ☐ Good
- ☐ Fair
- ☐ Poor

How do you rate the performance of Department of Student Welfare in the Institute?

- ☐ Excellent
- ☒ Very Good
- ☐ Good
- ☐ Fair
- ☐ Poor

How do you rate the grievance redressal mechanism in the Institute?

- ☐ Excellent
- ☒ Very good
- ☐ Good
- ☐ Fair
- ☐ Poor

This form was created inside of IET Bhaddal Technical Campus.

Google Forms

Students Feedback

IET BHADDAL TECHNICAL CAMPUS, ROPAR

Email

manudhiman3235@gmail.com

Name

Manpreet Singh

Roll no.

2127528

Branch

B pharmacy

Semester

7th

Why you selected this programme ?

- ☐ Current Industrial scenario is favourable for this programme
- ☒ Parents made me select this course
- ☐ Friends/Sibling is pursuing the same course
- ☐ No particular reason
- ☐ School teachers guided for the same

How do you rate the Programme in terms of the curriculum syllabi in different semesters?

- ☐ Excellent
- ☐ Very Good
- ☐ Good
- ☒ Fair
- ☐ Poor

☐ Option 1

☐ Option 1

☐ Option 1

How do you rate the courses in terms of their relevance to the latest and/or future technologies?

- ☐ Excellent
- ☐ Very Good
- ☐ Good
- ☒ Fair
- ☐ Poor

How do you rate the quality and relevance of the courses included in the curriculum?

- ☐ Excellent
- ☐ Very Good
- ☒ Good
- ☐ Fair
- ☐ Poor

How do you rate the quality of teaching during the entire programme?

- ☐ Excellent
- ☒ Very Good
- ☐ Good
- ☐ Fair
- ☐ Poor

How do you rate the teacher`s approach to your overall development?

- ☒ Excellent
- ☐ Very Good
- ☐ Good
- ☐ Fair
- ☐ Poor

How do you rate the infrastructure of the classrooms for effective delivery of the lectures?

- ☐ Excellent
- ☒ Very Good
- ☐ Good
- ☐ Fair
- ☐ Poor

How do you rate the laboratories and other facilities for effective learning?

- ☐ Excellent
- ☒ Very Good
- ☐ Good
- ☐ Fair
- ☐ Poor

How do you rate the availability of text books and reference books available in the library?

- ☐ Excellent
- ☐ Very Good
- ☐ Good
- ☒ Fair
- ☐ Poor

How do you rate the transparency of the evaluation system in the Institute?

- ☐ Excellent
- ☐ Very Good
- ☒ Good
- ☐ Fair
- ☐ Poor

How do you rate the fairness of internal evaluation process by the teachers?

- ☐ Excellent
- ☒ Very good
- ☐ Good
- ☐ Fair
- ☐ Poor

How do you rate the infrastructure, cleanliness and other facilities in the hostel?

- ☐ Excellent
- ☒ Very good
- ☐ Good
- ☐ Fair
- ☐ Poor

How do you rate the quality of food ,hygiene maintenance in the mess and cafeterias?

- ☐ Excellent
- ☐ Very Good'
- ☐ Good
- ☐ Fair
- ☒ Poor

How do you rate the institute activities that help in getting jobs and placements?

- ☐ Excellent
- ☐ Very good
- ☐ Good
- ☐ Fair
- ☒ Poor

How do you rate the services and your interaction with the admin department?

- ☐ Excellent
- ☐ Very Good
- ☐ Good
- ☒ Fair
- ☐ Poor

How do you rate the transport facility of the Institute?

- ☐ Excellent
- ☐ Very Good
- ☐ Good
- ☐ Fair
- ☒ Poor

How do you rate the professional environment in the Institute?

- ☐ Excellent
- ☒ Very good
- ☐ Good
- ☐ Fair
- ☐ Poor

How do you rate the performance of Department of Student Welfare in the Institute?

- ☐ Excellent
- ☐ Very Good
- ☒ Good
- ☐ Fair
- ☐ Poor

How do you rate the grievance redressal mechanism in the Institute?

- ☐ Excellent
- ☐ Very good
- ☐ Good
- ☒ Fair
- ☐ Poor

This form was created inside of IET Bhaddal Technical Campus.

Google Forms

Students Feedback

IET BHADDAL TECHNICAL CAMPUS, ROPAR

Email

sardarnimuskaan@gmail.com

Name

Muskaan

Roll no.

24250279

Branch

BCA

Semester

1st

Why you selected this programme ?

- ☐ Current Industrial scenario is favourable for this programme
- ☐ Parents made me select this course
- ☐ Friends/Sibling is pursuing the same course
- ☒ No particular reason
- ☐ School teachers guided for the same

How do you rate the Programme in terms of the curriculum syllabi in different semesters?

- ☐ Excellent
- ☐ Very Good
- ☒ Good
- ☐ Fair
- ☐ Poor

☐ Option 1

☐ Option 1

☐ Option 1

How do you rate the courses in terms of their relevance to the latest and/or future technologies?

- ☐ Excellent
- ☐ Very Good
- ☒ Good
- ☐ Fair
- ☐ Poor

How do you rate the quality and relevance of the courses included in the curriculum?

- ☐ Excellent
- ☐ Very Good
- ☒ Good
- ☐ Fair
- ☐ Poor

How do you rate the quality of teaching during the entire programme?

- ☒ Excellent
- ☐ Very Good
- ☐ Good
- ☐ Fair
- ☐ Poor

How do you rate the teacher`s approach to your overall development?

- ☒ Excellent
- ☐ Very Good
- ☐ Good
- ☐ Fair
- ☐ Poor

How do you rate the infrastructure of the classrooms for effective delivery of the lectures?

- ☐ Excellent
- ☐ Very Good
- ☐ Good
- ☒ Fair
- ☐ Poor

How do you rate the laboratories and other facilities for effective learning?

- ☐ Excellent
- ☐ Very Good
- ☐ Good
- ☐ Fair
- ☒ Poor

How do you rate the availability of text books and reference books available in the library?

- ☐ Excellent
- ☐ Very Good
- ☒ Good
- ☐ Fair
- ☐ Poor

How do you rate the transparency of the evaluation system in the Institute?

- ☐ Excellent
- ☒ Very Good
- ☐ Good
- ☐ Fair
- ☐ Poor

How do you rate the fairness of internal evaluation process by the teachers?

- ☐ Excellent
- ☒ Very good
- ☐ Good
- ☐ Fair
- ☐ Poor

How do you rate the infrastructure, cleanliness and other facilities in the hostel?

- ☐ Excellent
- ☐ Very good
- ☐ Good
- ☒ Fair
- ☐ Poor

How do you rate the quality of food ,hygiene maintenance in the mess and cafeterias?

- ☐ Excellent
- ☐ Very Good'
- ☐ Good
- ☒ Fair
- ☐ Poor

How do you rate the institute activities that help in getting jobs and placements?

- ☐ Excellent
- ☐ Very good
- ☐ Good
- ☐ Fair
- ☒ Poor

How do you rate the services and your interaction with the admin department?

- ☐ Excellent
- ☒ Very Good
- ☐ Good
- ☐ Fair
- ☐ Poor

How do you rate the transport facility of the Institute?

- ☐ Excellent
- ☐ Very Good
- ☒ Good
- ☐ Fair
- ☐ Poor

How do you rate the professional environment in the Institute?

- ☐ Excellent
- ☐ Very good
- ☒ Good
- ☐ Fair
- ☐ Poor

How do you rate the performance of Department of Student Welfare in the Institute?

- ☐ Excellent
- ☐ Very Good
- ☒ Good
- ☐ Fair
- ☐ Poor

How do you rate the grievance redressal mechanism in the Institute?

- ☐ Excellent
- ☐ Very good
- ☐ Good
- ☒ Fair
- ☐ Poor

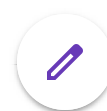
This form was created inside of IET Bhaddal Technical Campus.

Google Forms

Students Feedback

365 responses

[Publish analytics](#)



Email

348 responses

faizanghaus39@gmail.com

jaspreetkaur70363@gmail.com

saquibahmad538@gmail.com

brarnninder201@gmail.com

ramanbanga5911@gmail.com

basrakiranpreetkaur98@gmail.com

sc9007843@gmail.com

Rohitbhatia8676538@gmail.com

Yushanpreetkaur@gmail.com

hk874970@gmail.com

shalinidogra732007@gmail.com

mohdraizoiu098@gmail.com

ayushpartapsingh9@gmail.com

kaundalsahil109@gmail.com

touseefs753@gmail.com

meenabadyal25@gmail.com

kumarip82554@gmail.com

Yes

arshdeepsood1@gmail.com



rishabkumar24102004@gmail.com

montysingh6239@gmail.com

preetsaini9732@gmail.com

amardeepd03@gmail.com

Shaktimansingh7254@gmail.com

rituritika429@gmail.com

nehasaini6660500@gmail.com

dauda3622@gmail.com

abhiamitverma@gmail.com

kishukanishq4@gmail.com

Hs2891800@gmail.com

rashidilyas0786@gmail.com

kiranjeetkang471@gmail.com

ankitsatsa46@gmail.com

klvrsingh @gmail.com

rehanaman237@gmail.com

simranjeetkainth5@gmail.com

Po

jashanpreet001606@gmail.com

navkdhillon9@gmail.com

566rahulsharma@gmail.com



Darowais9915@gmail.com

pratibhachoudhary349@gmail.com

Kaurmanjitjaswal@gmail.com

fkhan405075@gmail.com

anishbhagat606@gmail.com

amitsinghjk0928@gmail.com

a.antriksh33@gmail.com

tshivam20907@gmail.com

asifmohd81879@gmail.com

sramanpreet749@gmail.com

lakhaharsh23@gmail.com

abdullahtaha506@gmail.com

vishal.pathak.332004@gmail.com

ghaichanchal556@gmail.com

akwindersaini2005@gmail.com

kaurmandeep58855@gmail.com

balravinder2003@gmail.com

gursimrankaur1704@gmail.com

Abhineetkaur057@gmail.com

Aishvirbains@gmail.com

pankajsharma27569@gmail.com



lagproblem1115@gmail.com

ranachinu42@gmail.com

Bhuveshpama@gmail.com

Tanujpreetsingh8@gmail.com

tanishsharma1802@gmail.com

rajanyadav732491@gmail.com

prabhprabhkaur98@gmail.com

Bhatadil93933@gmail.com

sjujhar200@gmail.com

sa1550387@gmail.com

sumitplassi@gmail.com

kulwinderbhaddal@gmail.com

keshav.vr311@gmail.com

akritisadana1@gmail.com

angadsingh9803901@gmail.com

arifishaq454@gmail.com

parampreetk184@gmail.com

34parulazad@gmail.com

nikhilsynal@gmail.com

sauravdevgan99@gmail.com

Jashanpreet001606@gmail.com



basantichand457@gmail.com

ranisunita3416@gmail.com

nepolist5@gmail.com

lovepreetkaur7667@gmail.com

arshkaur2405@gmail.com

basitrashid301@gmail.com

wyc786.s@gmail.com

yachna1229@gmail.com

jasprt1516@gmail.com

sukhpreetkang289@gmail.com

sumitx2490@gmail.com

dilpreetsingh1282006@gmail.com

akansharao5342@gmail.com

Sukhneetkaur589@gmail.com

nav.kaur73342@gmail.com

manveersingh55100gmail.com

simranjanjua1001@gmail.com

aashishdutta640@gmail.com

227 more responses are hidden



Name

357 responses

Jaspreet Kaur

Ramanpreet kaur

Mandeep Kaur

Rohit

Ravinder singh

Gurleen kaur

Saquib ahmed shah

Simranjit kaur

Amanpreet Kaur

Kiranpreet kaur

Simranjeet kaur

Soni Devi

Ramanpreet Singh

Yushanpreet kaur

Lovepreet kaur

Harish kumar

Mohammad faizan ghaus

Shalni

Rayaz Ahmed



Anand Prakash

Amanjot kaur

Gagandeep kaur

Ayush partap singh

Abhishek Kumar

Simranjeet kaur

Pooja Kumari

Mohd Altaf Ganaie

Arshdeep singh

Rishab

Ayush kumar

Gurpreet kaur

Amardeep Singh

Shaktiman kumar

Ritika

Neha Saini

Daud Ansari

Amit Verma

Kanishq

Harjot singh

Rashid Ilyas



Kiranjeet Kaur

Happy kumar

Kulvir singh

Rehan Aman

Sneha

Inderpreet kaur

Navpreet kaur

Rahul sharma

Owais Ahmad Dar

Pratibha Choudhary

Manjit kaur

Faizan Khan

Anish Kumar

Amit singh

Antriksh Attri

Shivam thakur

Mohd Asif

Harsh kumar

Taha Abdullah

Vishal Pathak

Chanchal



Akwinder kaur

Gursimran kaur

Aishvir singh

Pankaj Sharma

Gourav

Chirag rana

Bhuvesh pama

Tanujpreet singh

Tanish

Rajanyadav

Parbhjot kaur

Adil

Jujhar Singh

Saif Ali

Sumit Singh

Keshav

Akriti

ANGAD SINGH

Arif Ishaq Magrey

Parampreet Kaur

Parul



Nikhil Synal

Saurav

Inderpreet kaur

Basanti Chand

Sunita Rani

Akshit

Arshdeep kaur

Basit Rashid Mir peerzada

Viquar younas

Yachna sindhu

Sukhpreet kaur

Sumit kumar

Dilpreet singh

Akansha

Sukhneet Kaur

Navneet kaur

Manveer Singh

Simrandeep Singh

222 more responses are hidden



Roll no.

346 responses

2309687

2228541

2425259

2309679

2340268

2211070

2425042

R2425060

2204568

R-2425227

R-2425329

R2425062

2339648

R-2425003

2327543

2425051

2327562

2327566

220451902071



2425029

2309636

2025293

2211019

2204552

R-2425002

2327574

2127531

2126883

2105024

R-2425176

2223463

2425107

2126908

2425129

2303602

2425104

2126911

2425182

2309692

R2425262



2425018

2324569

2227781

2327567

2303628

2327549

2327539

2327537

2327540

R2425228

2327564

2425325

R-2425023

2126920

2228548

2204410

2425110

2425172

R2425178

2211062

2425097



R2425026

2425135

2425019

2425188

2309684

2425260

2327583

2324050

2127535

2238849

R2425012

2134971

2127547

2327572

R2425118

2309682

R 2425201

2126876

2425089

2127534

R2425121



2324126

2425262

2324268

2424092

R-2324178

2425125

2303611

2126880

R-2425241

2127552

2228528

2309674

2425054

2327548

2228515

2425142

2425083

2309662

225 more responses are hidden



Branch

358 responses

B pharmacy

BCA

B pharmacy

Btech cse

B Pharmacy

MBA

B.pharmacy

BBA

B.com

Bca

B. Pharmacy

BCA

B. Pharmacy

MBA

Pharmacy

B.tech cse

BBA

Btech CSE

Bsc mls



B. Com

MCA

Bpharmacy

B.pharma

Bba

B.tech (cse)

Civil engineering

Mba

Management

B.Pharmacy

B tech cse

B.Pharmacy

B.tech CSE

BSC MLS

B pharma

B.pharmacy

B Pharma

Btech Cse

Diploma pharmacy

B pharm

B.tech(ME)



B PHARMACY

Mechanical engineering

D pharmacy

Ropar

B Pharmacy

D pharma

B. pharmacy

Btech EE

B . Pharmacy

B.com

Bsc MLS

B tech (civil)

Bcom

B.pharm

Bcom honours

BCOM (H)

Bpharmacy

B. Pharm

B.tech. CSE

B-Pharmacy

B pharm



Electrical engineering (DIPLOMA)

2023

Institute of pharmaceutical sciences

B.tech (EEE)

Bcom hons

Betch cse

Btech(CSE)

Btech CSE

Pharmacy (D Pharma)

Bca

B com hons.

D. Pharmacy

EE diploma

B.tech(CSE)

Electrical engineering

B-Pharmacy

Btech Civil

B. Com (H)

Bcom

2024

DIPLOMA LEET



b pharmacy

Bsc mls

D PHARMACY

Pharmacy (D.Pharma)

Btech Cse

D Pharm

Btech (cse)

B tech (cse)

let bhaddal clg

B pharmecy

B. PHARMACY

B.Tech CSE

B tech Cse

BCA LET

Civil Engineering

B tech CSE

B tech (CSE)

B.COM

51 more responses are hidden



Semester

357 responses

3rd

1st

5th

7th

1

3

1st

5

First

3rd

7

First

5th

2nd year

First semester

3 rd

1st

1sem

1st year



3rd sem

3 sem

1st Semester

5 th

2nd

1 years

3 rd sem

7th

Third semester

1

first

1St

Third sem

7

1 year

1st Semester

Seven

Sem1

2ND

d-pharma (1-year)

1st sme



2 year

1 semester

1 semester

1st sem

5th sem

1st semester

1st

2

1st

1st

1st semester

7th

1st year

5

Sem. 3rd

1st sem.

1st year

1st

Fifth

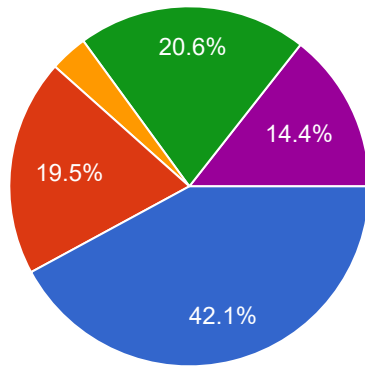
1ST



Why you selected this programme ?

 Copy

354 responses

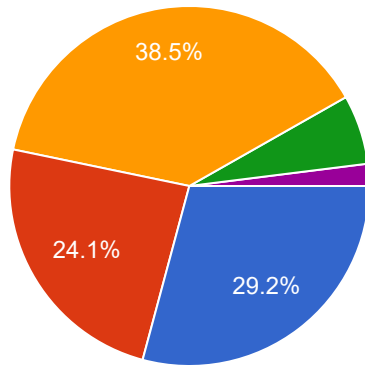


- Current Industrial scenario is favourable for this programme
- Parents made me select this course
- Friends/Sibling is pursuing the same course
- No particular reason
- School teachers guided for the same

How do you rate the Programme in terms of the curriculum syllabi in different semesters?

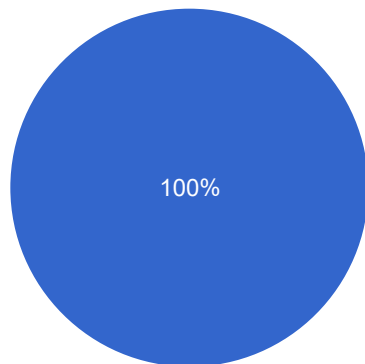
 Copy

353 responses



- Excellent
- Very Good
- Good
- Fair
- Poor

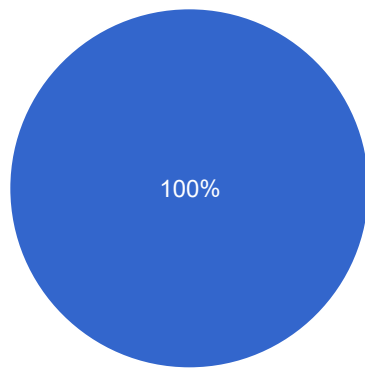
104 responses

 Copy

- Option 1

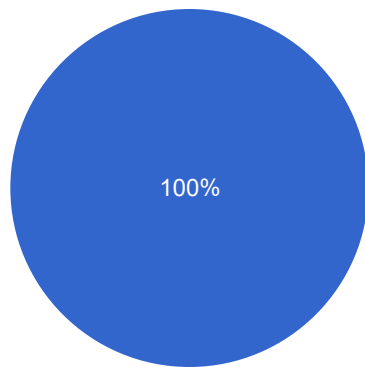


80 responses

 Copy

● Option 1

69 responses

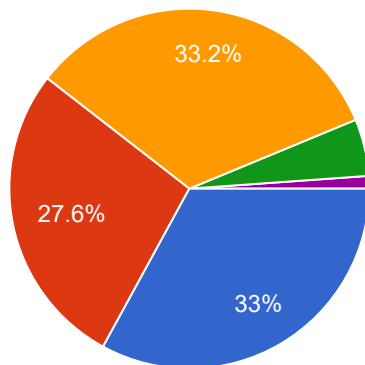
 Copy

● Option 1

How do you rate the courses in terms of their relevance to the latest and/or future technologies?

 Copy

352 responses



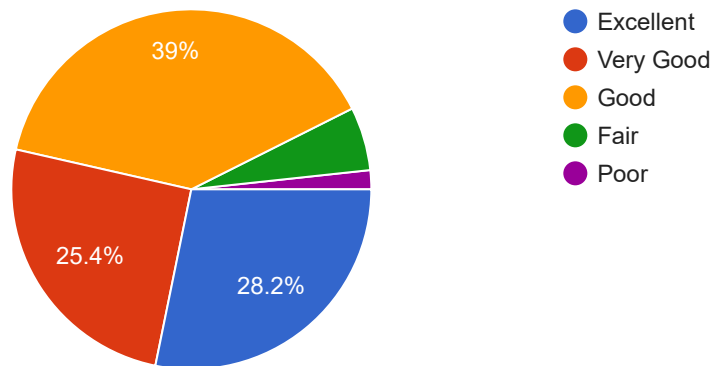
● Excellent
● Very Good
● Good
● Fair
● Poor



How do you rate the quality and relevance of the courses included in the curriculum?

 Copy

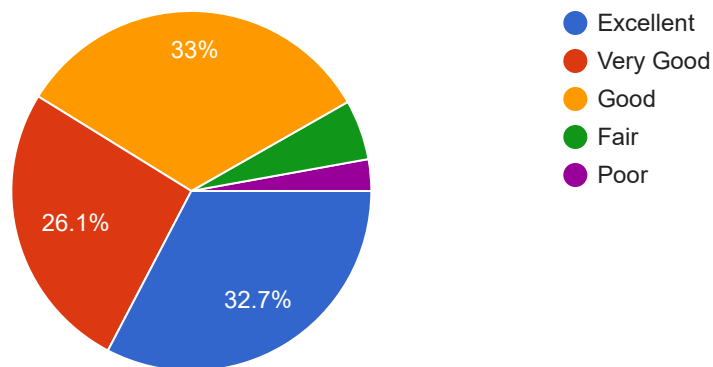
351 responses



How do you rate the quality of teaching during the entire programme?

 Copy

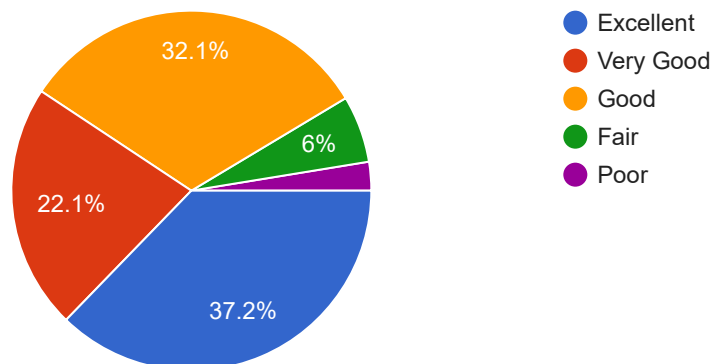
352 responses



How do you rate the teacher's approach to your overall development?

 Copy

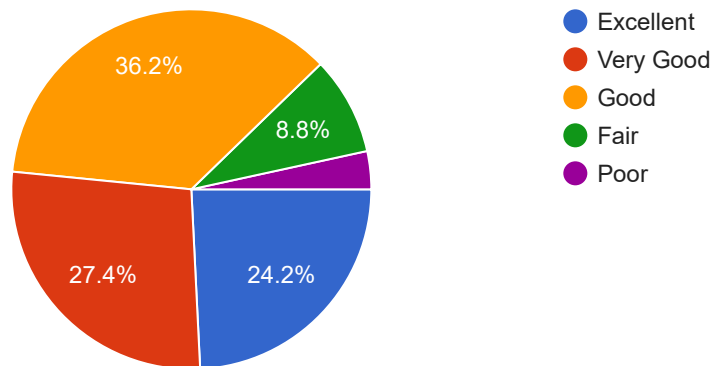
349 responses



How do you rate the infrastructure of the classrooms for effective delivery of the lectures?

 Copy

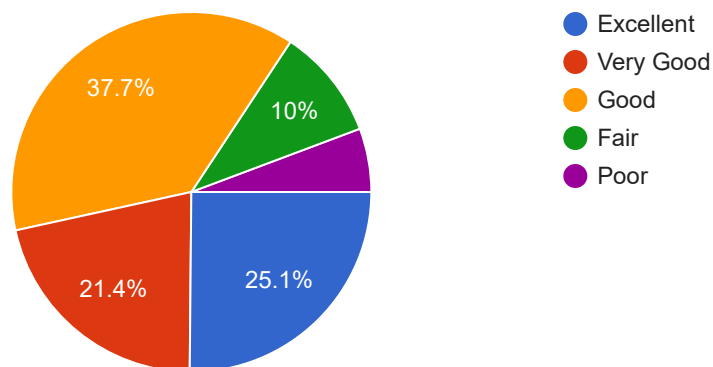
351 responses



How do you rate the laboratories and other facilities for effective learning?

 Copy

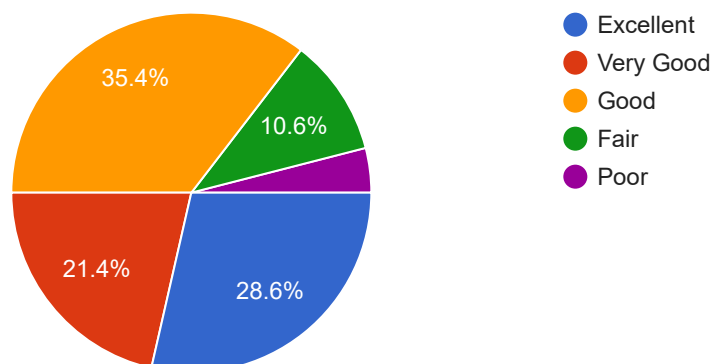
350 responses



How do you rate the availability of text books and reference books available in the library?

 Copy

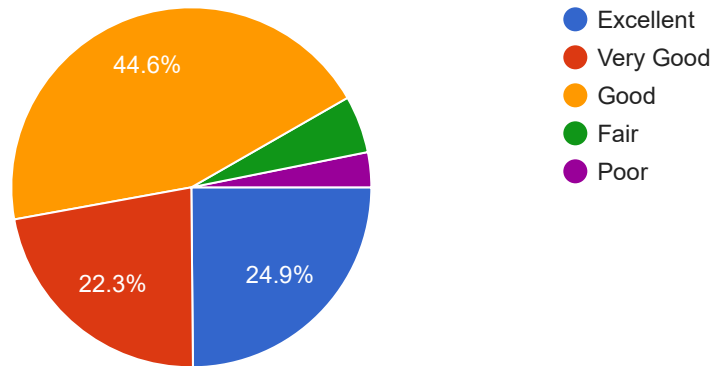
350 responses



How do you rate the transparency of the evaluation system in the Institute?

 Copy

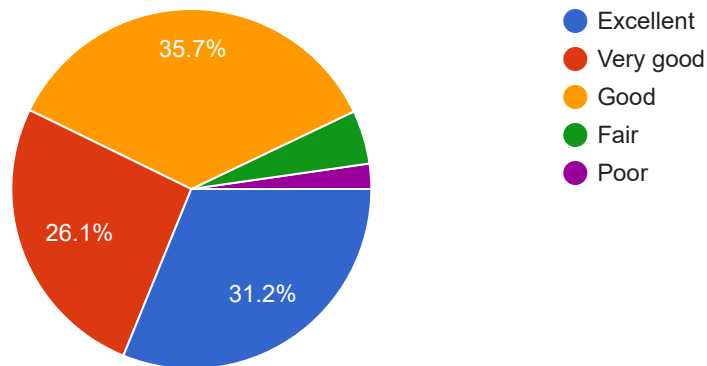
350 responses



How do you rate the fairness of internal evaluation process by the teachers?

 Copy

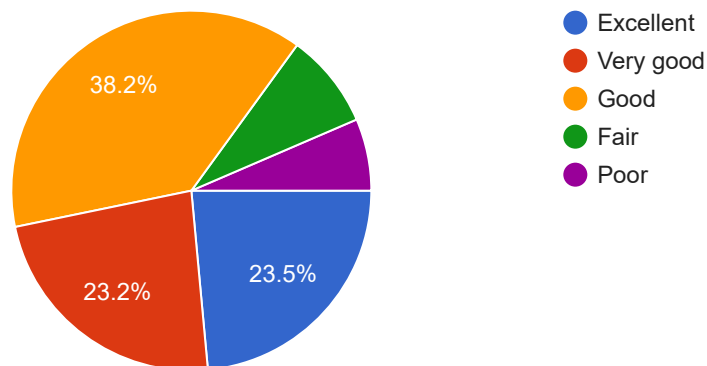
353 responses



How do you rate the infrastructure, cleanliness and other facilities in the hostel?

 Copy

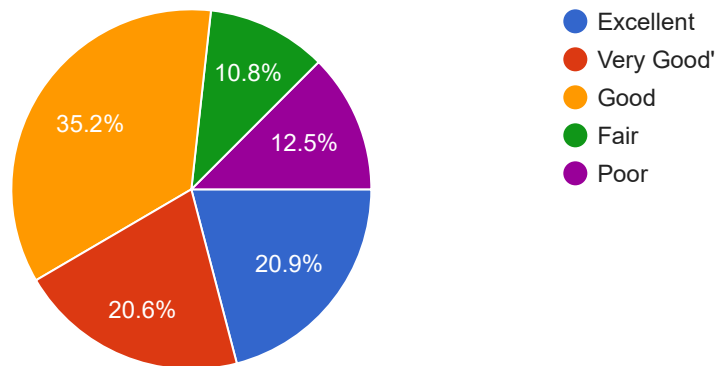
340 responses



How do you rate the quality of food ,hygiene maintenance in the mess and cafeterias?

 Copy

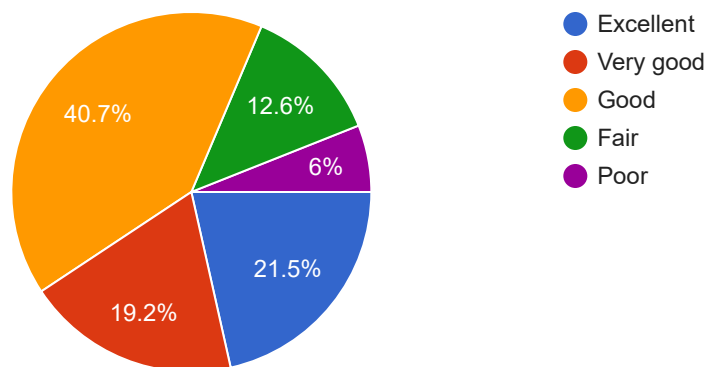
344 responses



How do you rate the institute activities that help in getting jobs and placements?

 Copy

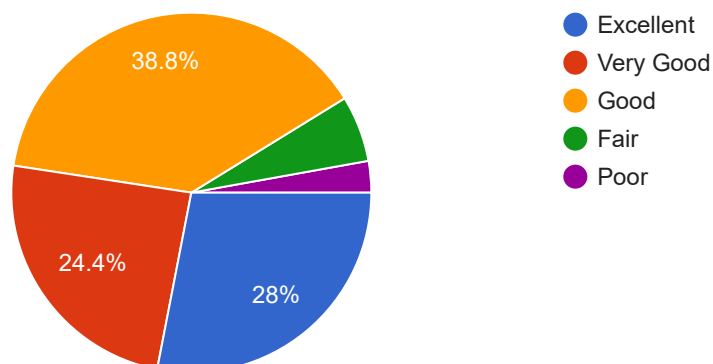
349 responses



How do you rate the services and your interaction with the admin department?

 Copy

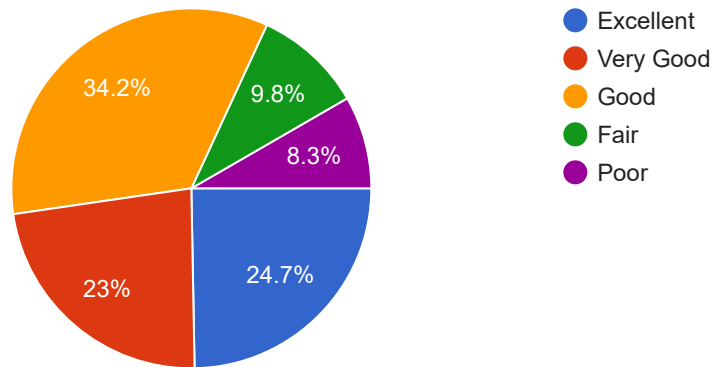
353 responses



How do you rate the transport facility of the Institute?

 Copy

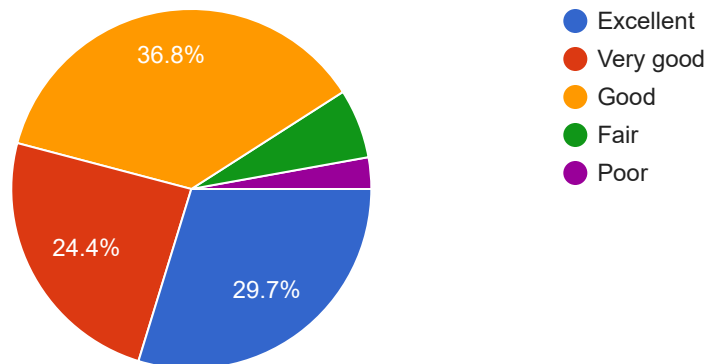
348 responses



How do you rate the professional environment in the Institute?

 Copy

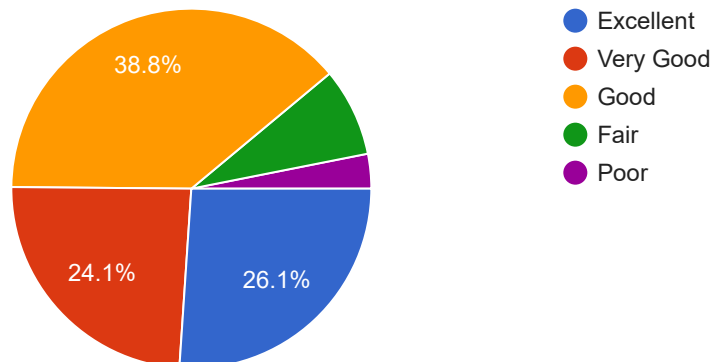
353 responses



How do you rate the performance of Department of Student Welfare in the Institute?

 Copy

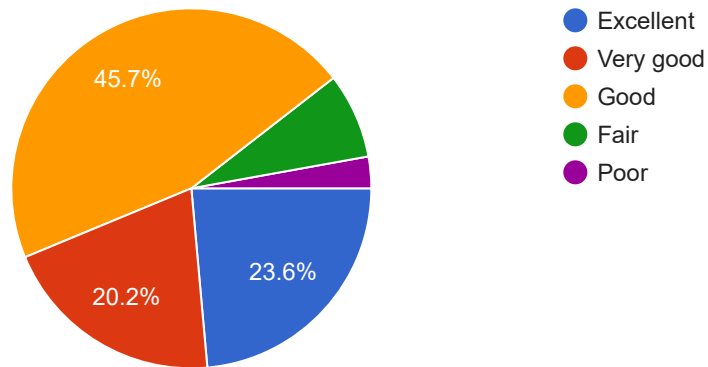
353 responses



How do you rate the grievance redressal mechanism in the Institute?

 Copy

352 responses



This content is neither created nor endorsed by Google. - [Terms of Service](#) - [Privacy Policy](#)

Does this form look suspicious? [Report](#)

Google Forms



Faculty Feedback

IET BHaddal Technical Campus

Name *

Bhawna Arora

Designation *

Assistant Professor

Department *

IMS

Employee ID *

IM124

Highest Qualification *

MBA

How do you rate the sequence of the courses provided in the curriculum? *

☒ Excellent

☐ Good

☐ Fair

☐ Poor

How do you rate the syllabus of the courses in relation to the competencies expected out of the course? *

☒ Excellent

☐ Good

☐ Fair

☐ Poor

How do you rate the allocation of the credits and contact hours (L-T-P) to the courses? *

☐ Excellent

☒ Good

☐ Fair

☐ Poor

Rate the courses in terms of extra learning or self-learning considering the design of the courses. *

☐ Excellent

☒ Good

☐ Fair

☐ Poor

How do you rate the evaluation scheme designed for each of the course? *

- ☒ Excellent
- ☐ Good
- ☐ Fair
- ☐ Poor

How do you rate the composition of the programme in terms of basic science, Engineering science, Humanities, Discipline core, discipline elective , open elective, project etc.? *

- ☒ Excellent
- ☐ Good
- ☐ Fair
- ☐ Poor

How do you rate the offering of the electives in terms of their relevance to the specialization streams and technological advancements? *

☒ Excellent

☐ Good

☐ Fair

☐ Poor

How do you rate the relevance of the Text Books and reference books by their International recognition to the courses? *

☒ Excellent

☐ Good

☐ Fair

☐ Poor

Rate the courses in terms of sequence of offering, considering whether the proceeding courses have been covered. *

☐ Excellent

☒ Good

☐ Fair

☐ Poor

How do you rate the extent of courses having LAB components and domain used for designing the experiments for the LAB components? *

☐ Excellent

☒ Good

☐ Fair

☐ Poor

Rate the opportunity extended and Financial aid to participate in Faculty development , Conferences, Workshops etc. *

- ☐ Excellent
- ☒ Good
- ☐ Fair
- ☐ Poor

How do you rate the infrastructural facilities like cabin, computer, class room etc? *

- ☐ Excellent
- ☒ Good
- ☐ Fair
- ☐ Poor

Rate the Research environment and Library resources. *

- ☐ Excellent
- ☒ Good
- ☐ Fair
- ☐ Poor

Rate the working environment such as the relationship with co-workers and superiors, organizational culture etc. *

- ☐ Excellent
- ☒ Good
- ☐ Fair
- ☐ Poor

How do you rate the Examination system support? *

☐ Excellent

☒ Good

☐ Fair

☐ Poor

How do you rate the professional growth opportunities in terms of knowledge base, pedagogy etc. in the Institute? *

☐ Excellent

☒ Good

☐ Fair

☐ Poor

How do you rate the recreational facilities within the campus? *

☐ Excellent

☒ Good

☐ Fair

☐ Poor

This content is neither created nor endorsed by Google.

Google Forms

Faculty Feedback

IET BHaddal Technical Campus

Name *

VISHAL

Designation *

AP

Department *

APPLIED SCIENCE

Employee ID *

AS14

Highest Qualification *

MSC

How do you rate the sequence of the courses provided in the curriculum? *

- ☒ Excellent
- ☐ Good
- ☐ Fair
- ☐ Poor

How do you rate the syllabus of the courses in relation to the competencies expected out of the course? *

- ☐ Excellent
- ☒ Good
- ☐ Fair
- ☐ Poor

How do you rate the allocation of the credits and contact hours (L-T-P) to the courses? *

☐ Excellent

☒ Good

☐ Fair

☐ Poor

Rate the courses in terms of extra learning or self-learning considering the design of the courses. *

☐ Excellent

☒ Good

☐ Fair

☐ Poor

How do you rate the evaluation scheme designed for each of the course? *

- ☒ Excellent
- ☐ Good
- ☐ Fair
- ☐ Poor

How do you rate the composition of the programme in terms of basic science, Engineering science, Humanities, Discipline core, discipline elective , open elective, project etc.? *

- ☒ Excellent
- ☐ Good
- ☐ Fair
- ☐ Poor

How do you rate the offering of the electives in terms of their relevance to the specialization streams and technological advancements? *

- ☐ Excellent
- ☒ Good
- ☐ Fair
- ☐ Poor

How do you rate the relevance of the Text Books and reference books by their International recognition to the courses? *

- ☐ Excellent
- ☒ Good
- ☐ Fair
- ☐ Poor

Rate the courses in terms of sequence of offering, considering whether the proceeding courses have been covered. *

- ☐ Excellent
- ☒ Good
- ☐ Fair
- ☐ Poor

How do you rate the extent of courses having LAB components and domain used for designing the experiments for the LAB components? *

- ☐ Excellent
- ☒ Good
- ☐ Fair
- ☐ Poor

Rate the opportunity extended and Financial aid to participate in Faculty development , Conferences, Workshops etc. *

- ☒ Excellent
- ☐ Good
- ☐ Fair
- ☐ Poor

How do you rate the infrastructural facilities like cabin, computer, class room etc? *

- ☐ Excellent
- ☒ Good
- ☐ Fair
- ☐ Poor

Rate the Research environment and Library resources. *

- ☐ Excellent
- ☒ Good
- ☐ Fair
- ☐ Poor

Rate the working environment such as the relationship with co-workers and superiors, organizational culture etc. *

- ☒ Excellent
- ☐ Good
- ☐ Fair
- ☐ Poor

How do you rate the Examination system support? *

☒ Excellent

☐ Good

☐ Fair

☐ Poor

How do you rate the professional growth opportunities in terms of knowledge base, pedagogy etc. in the Institute? *

☐ Excellent

☒ Good

☐ Fair

☐ Poor

How do you rate the recreational facilities within the campus? *

☐ Excellent

☒ Good

☐ Fair

☐ Poor

This content is neither created nor endorsed by Google.

Google Forms

Alumni Feedback Form

IET BHADDAL TECHNICAL CAMPUS, ROPAR

Name of Alumni: *

Ms.Manpreet Kaur

Father Name: *

Mr.Bhupinder Singh

University Roll No.: *

1608544

Branch/ Class: *

MBA

Enrollment Batch: *

2016

Phone No.: *

9914587131

Whats App No.: *

9914587131

Email: *

manpreet.ims16@gmail.com

Present Status: *

Working

Present Employer (If working):

IET Bhaddal Technical Campus, Ropar

Designation: *

Assistant Professor

Income: *

15600

How useful are the elective subjects offered, during course of study? *

- ☒ Elective subjects enabled to make my knowledge very stronger
- ☐ Elective subjects enabled to make my knowledge moderately stronger
- ☐ Elective subjects enabled me to get the basic knowledge
- ☐ Elective subjects justified my choice for the selection of courses

Was there a balance between core subjects and applied subjects in the curriculum? *

- ☒ Good Balance
- ☐ Moderate Balance
- ☐ Need More attention

Were sufficient teaching hours allocated in the time table for subject/syllabus completion? *

- ☒ Yes
- ☐ Not Sure
- ☐ No

How do you assess the laboratory courses of curriculum including list of experiments and necessary lab facilities were appropriate during your studies? *

- ☒ Number of experiments covering the entire syllabus and the lab were fully equipped
- ☐ Number of experiments covering the important experiments and the lab were fully equipped
- ☐ Number of experiments covering the syllabus only for which the apparatus was available in the lab and the lab, were fully equipped
- ☐ Number of experiments covering the syllabus partially but the apparatus was available

Do you agree that internal evaluation during your studies was transparent and fair? *

- ☒ Strongly agree
- ☐ Agree
- ☐ Neutral
- ☐ Disagree
- ☐ Strongly Disagree

Do you think that department efforts to provide content beyond syllabus were relevant? *

- ☒ Beyond the syllabus relevant were taught
- ☐ Only one topic in most of the subject was taught
- ☐ Only syllabus was covered
- ☐ No efforts were made

Whether the curriculum you studied fulfilled the Industrial requirements? *

- ☐ Curriculum included the industrial needs
- ☒ Curriculum covered the practical's considered crucial for hands on training in industry
- ☐ Industrial visits enhanced the knowledge about the requirement of industry
- ☐ Only technical part was strengthened

This content is neither created nor endorsed by Google.

Google Forms

Alumni Feedback Form

IET BHADDAL TECHNICAL CAMPUS, ROPAR

Name of Alumni: *

SHAILZA KAMAL

Father Name: *

SH CHANDU RAM

University Roll No.: *

117030763

Branch/ Class: *

CSE

Enrollment Batch: *

2001

Phone No.: *

8283814976

Whats App No.: *

8283814976

Email: *

shailzak1@gmail.com

Present Status: *

WORKING

Present Employer (If working):

BHSBIET, LEHRAGAGA

Designation: *

AP

Income: *

6-7 LPA

How useful are the elective subjects offered, during course of study? *

- ☐ Elective subjects enabled to make my knowledge very stronger
- ☐ Elective subjects enabled to make my knowledge moderately stronger
- ☒ Elective subjects enabled me to get the basic knowledge
- ☐ Elective subjects justified my choice for the selection of courses

Was there a balance between core subjects and applied subjects in the curriculum? *

- ☒ Good Balance
- ☐ Moderate Balance
- ☐ Need More attention

Were sufficient teaching hours allocated in the time table for subject/syllabus completion? *

- ☒ Yes
- ☐ Not Sure
- ☐ No

How do you assess the laboratory courses of curriculum including list of experiments and necessary lab facilities were appropriate during your studies? *

- ☒ Number of experiments covering the entire syllabus and the lab were fully equipped
- ☐ Number of experiments covering the important experiments and the lab were fully equipped
- ☐ Number of experiments covering the syllabus only for which the apparatus was available in the lab and the lab, were fully equipped
- ☐ Number of experiments covering the syllabus partially but the apparatus was available

Do you agree that internal evaluation during your studies was transparent and fair? *

- ☐ Strongly agree
- ☒ Agree
- ☐ Neutral
- ☐ Disagree
- ☐ Strongly Disagree

Do you think that department efforts to provide content beyond syllabus were relevant? *

- ☒ Beyond the syllabus relevant were taught
- ☐ Only one topic in most of the subject was taught
- ☐ Only syllabus was covered
- ☐ No efforts were made

Whether the curriculum you studied fulfilled the Industrial requirements? *

- ☐ Curriculum included the industrial needs
- ☒ Curriculum covered the practical's considered crucial for hands on training in industry
- ☐ Industrial visits enhanced the knowledge about the requirement of industry
- ☐ Only technical part was strengthened

This content is neither created nor endorsed by Google.

Google Forms

Employer Feedback

IET BHADDAL TECHNICAL CAMPUS, ROPAR

Name of Employer: *

Anil Kumar

Official Mail Id: *

anil@meandersoftware.co

Mobile Number: *

8968156995

Designation: *

Relationship manager r

How do you rate the technical skills & domain expertise of our graduates/Post graduates? *

- ☐ Excellent
- ☒ Good
- ☐ Satisfactory
- ☐ Poor

How do you rate communication & interpersonal skills of our graduates? *

- ☒ Excellent
- ☐ Good
- ☐ Satisfactory
- ☐ Poor

How do you rate aptitude & problem solving skills of our graduates? *

- ☐ Excellent
- ☒ Good
- ☐ Satisfactory
- ☐ Poor

How do you rate the team work efficiency of our graduates? *

- ☒ Excellent
- ☐ Good
- ☐ Satisfactory
- ☐ Poor

How do you rate values & ethics of our graduates? *

- ☒ Excellent
- ☐ Good
- ☐ Satisfactory
- ☐ Poor

How do you rate the self learning ability of our graduates? *

- ☒ Excellent
- ☐ Good
- ☐ Satisfactory
- ☐ Poor

How do you rate the work ethics of our graduates? *

- ☒ Excellent
- ☐ Good
- ☐ Satisfactory
- ☐ Poor

How do you rate the self management skills of our graduates? *

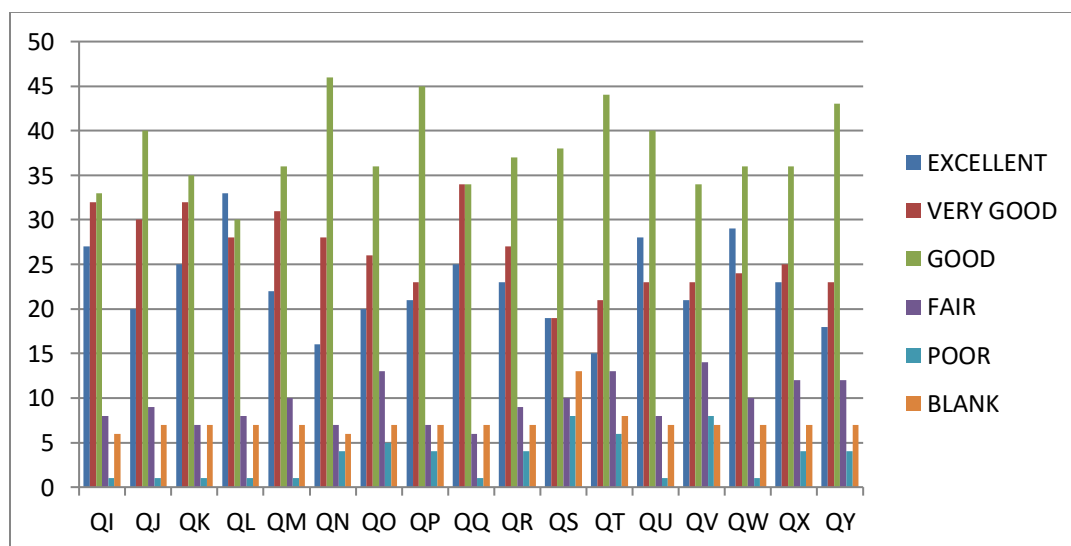
- ☐ Excellent
- ☒ Good
- ☐ Satisfactory
- ☐ Poor

This content is neither created nor endorsed by Google.

Google Forms

FEEDBACK ANALYSIS STUDENTS 2023-24

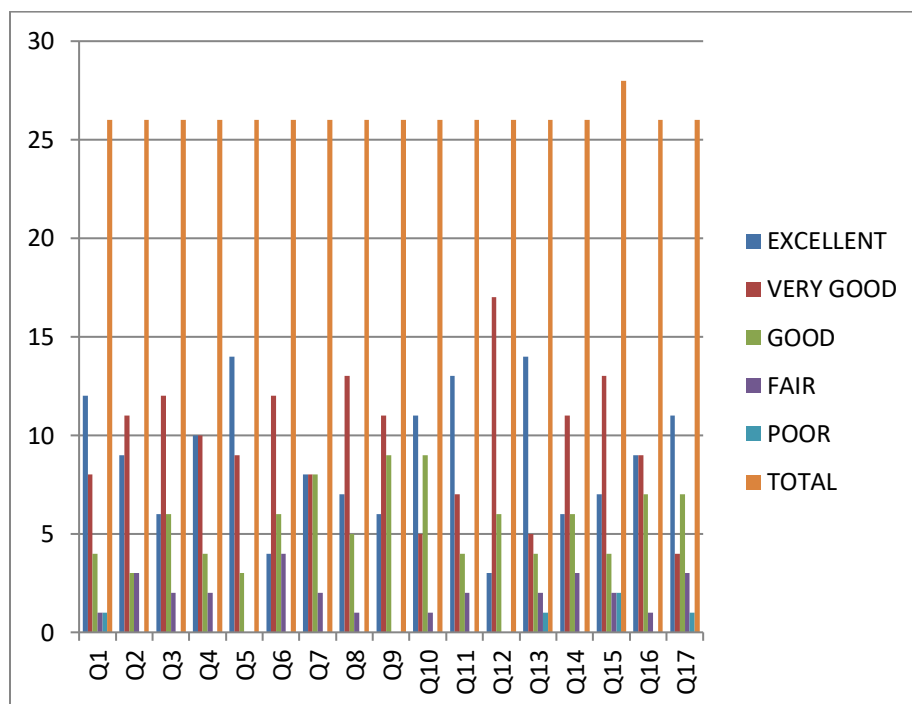
	QI	QJ	QK	QL	QM	QN	QO	QP	QQ	QR	QS	QT	QU	QV	QW	QX	QY
EXCELLENT	27	20	25	33	22	16	20	21	25	23	19	15	28	21	29	23	18
VERY GOOD	32	30	32	28	31	28	26	23	34	27	19	21	23	23	24	25	23
GOOD	33	40	35	30	36	46	36	45	34	37	38	44	40	34	36	36	43
FAIR	8	9	7	8	10	7	13	7	6	9	10	13	8	14	10	12	12
POOR	1	1	1	1	1	4	5	4	1	4	8	6	1	8	1	4	4
BLANK	6	7	7	7	7	6	7	7	7	7	13	8	7	7	7	7	7
	107	107	107	107	107	107	107	107	107	107	107	107	107	107	107	107	107



FEEDBACK ANALYSIS FACULTY 2023-24

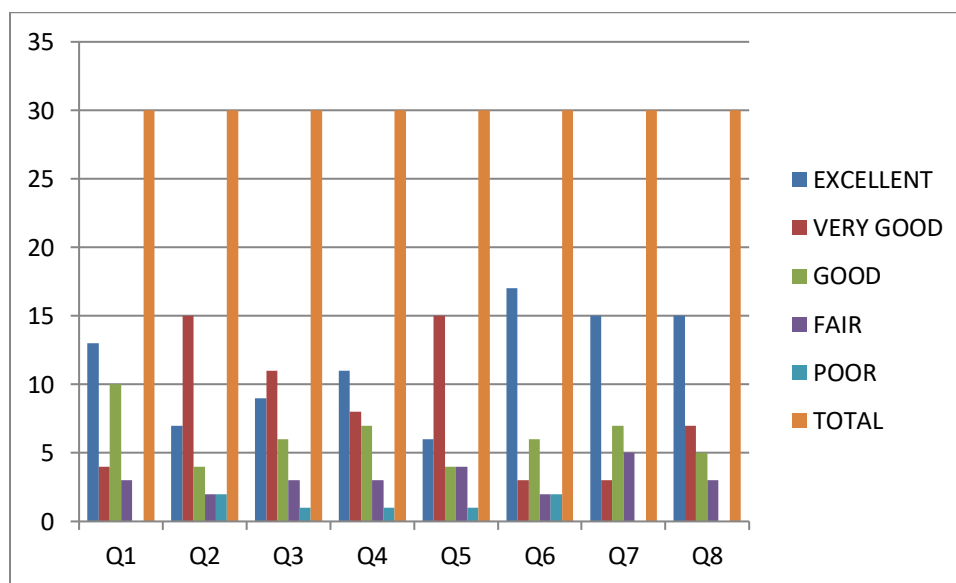
Faculty Feed Back Analysis

RANGE	Q1	Q2	Q3	Q4	Q5	Q6	Q7	Q8	Q9	Q10	Q11	Q12	Q13	Q14	Q15	Q16	Q17
EXCELLENT	12	9	6	10	14	4	8	7	6	11	13	3	14	6	7	9	11
VERY GOOD	8	11	12	10	9	12	8	13	11	5	7	17	5	11	13	9	4
GOOD	4	3	6	4	3	6	8	5	9	9	4	6	4	6	4	7	7
FAIR	1	3	2	2	0	4	2	1	0	1	2	0	2	3	2	1	3
POOR	1	0	0	0	0	0	0	0	0	0	0	0	1	0	2	0	1
TOTAL	26	26	26	26	26	26	26	26	26	26	26	26	26	26	28	26	26



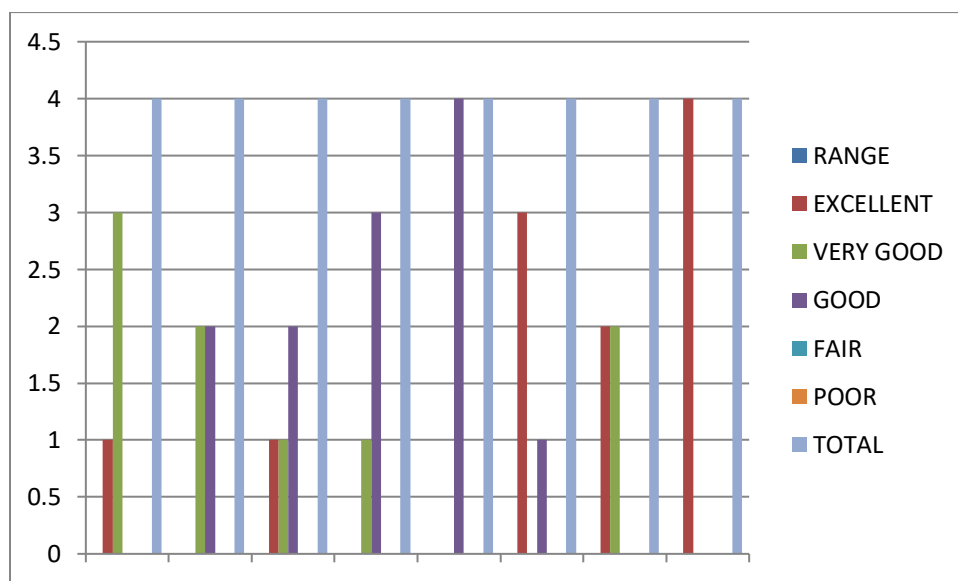
FEEDBACK ANALYSIS ALUMINI 2023-24

RANGE	Q1	Q2	Q3	Q4	Q5	Q6	Q7	Q8
EXCELLENT	13	7	9	11	6	17	15	15
VERY GOOD	4	15	11	8	15	3	3	7
GOOD	10	4	6	7	4	6	7	5
FAIR	3	2	3	3	4	2	5	3
POOR	0	2	1	1	1	2	0	0
TOTAL	30	30	30	30	30	30	30	30



FEEDBACK ANALYSIS EMPLOYER 2023-24

RANGE	Q1	Q2	Q3	Q4	Q5	Q6	Q7	Q8
EXCELLENT	1	0	1	0	0	3	2	4
VERY GOOD	3	2	1	1	0	0	2	0
GOOD	0	2	2	3	4	1	0	0
FAIR	0	0	0	0	0	0	0	0
POOR	0	0	0	0	0	0	0	0
TOTAL	4	4	4	4	4	4	4	4



ACTION TAKEN REPORT

(2023-2024)

Feedback from Students

Stakeholder	Student
No of Responses	107
Suggestions	Action Taken
Students need knowledge beyond syllabus	VAC were organized
Students are eager to discover new things on their own.	Participation in online courses was requested of the students.
They need to enhance knowledge in latest technology	Special lectures were organized
Students showing interest to improve soft skills	Classes on soft skills were taught by an outside resource person
Students wants to have sports activities and cultural activities	More such activities were organized by each and Every Department
Guest lectures workshops and other activities to be encouraged	Online webinars and Workshops were conducted
Students are interested in industrial visit and internships	Various Industrial visits were organized



IET BHADDAL

Campus: Bhaddal, PO Mianpur, Distt. Ropar, Punjab-140108 (India)
UGC approved (2f & 12B) | Affiliated to IKG-PTU (Jalandhar)

TECHNICAL
CAMPUS
ROPAR

ACTION TAKEN REPORT

FACULTY

ACTION TAKEN REPORT

(2023-2024)

Feedback From FACULTY

Stakeholder	Faculty
No of Responses	26
Suggestions	Action Taken
Constant improvement to keep knowledge current through self-learning	Faculty were asked to enhance Knowledge through online platforms like NPTEL
To enhance Knowledge in latest technologies	FDPS has been Regularly attended
To bridge gap between Students Training and industrial Requirement	Training Provided to do online Certification
Faculty members are suggested to attend and present conference to improve their research interest	Faculty members Presented and Attended conferences and improve their research interest
To develop their personalities and increase their knowledge in their respective fields, faculty members require guest lectures, workshops, and brief training.	Short term Courses were conducted and attended by Faculty
Mindfulness will increase productivity of faculties	Events like yoga has been organized to increase Mind Focus



IET BHADDAL

Campus: Bhaddal, PO Mianpur, Distt. Ropar, Punjab-140108 (India)
UGC approved (2f & 12B) | Affiliated to IKG-PTU (Jalandhar)

TECHNICAL
CAMPUS
ROPAR

ACTION TAKEN REPORT ALUMNI

ACTION TAKEN REPORT

(2023-2024)

Feedback From ALUMNI

Stakeholder	Alumini
No of Responses	30
Suggestions	Action Taken
Introduction of courses on Latest Technology Development	Value Added Courses related to Technical advancement were Organized
Emphasize Application based Teaching Learning process	Industrial Visits has been Done To Increase Practical knowledge
To encourage students for Startups and Entrepreneurship	Career Counseling and Placement Cell has been Set Up
Skill based Projects To make students Ready For Industry	Workshop Training and Industrial Visit Has been Conducted
Better placement Of students to increase scope of Employability	MOU'S have been signed with Various Companies



IET BHADDAL

Campus: Bhaddal, PO Mianpur, Distt. Ropar, Punjab-140108 (India)
UGC approved (2f & 12B) | Affiliated to IKG-PTU (Jalandhar)

TECHNICAL
CAMPUS
ROPAR

ACTION TAKEN REPORT EMPLOYER

ACTION TAKEN REPORT

(2023-2024)

Feedback From EMPLOYER

Stakeholder	Employer
No of Responses	4
Suggestions	Action Taken
More exposure required in skill based Projects	Practical Training has been Emphasized for students
Students should be good in Co curricular Activities	Interpersonal Skills and Life Training Skills classes has been Conducted
To introduce Course in latest technological Development	Technological advancement Like Value added courses has been Introduced
Encourage Students and Provide Knowledge to become Entrepreneur	Various Events Like Career Development by Placement Cells