



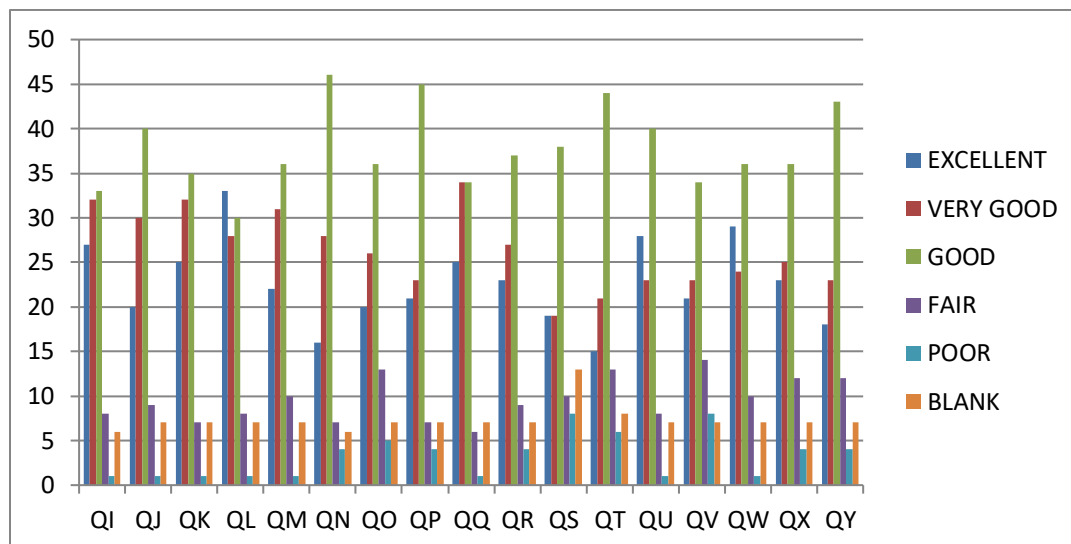
IET BHADDAL

TECHNICAL CAMPUS ROPAR

Campus: Bhaddal, PO Mianpur, Distt. Ropar, Punjab-140108 (India)
 UGC approved (2f & 12B) | Affiliated to IKG-PTU (Jalandhar)

FEEDBACK ANALYSIS STUDENTS 2023-24

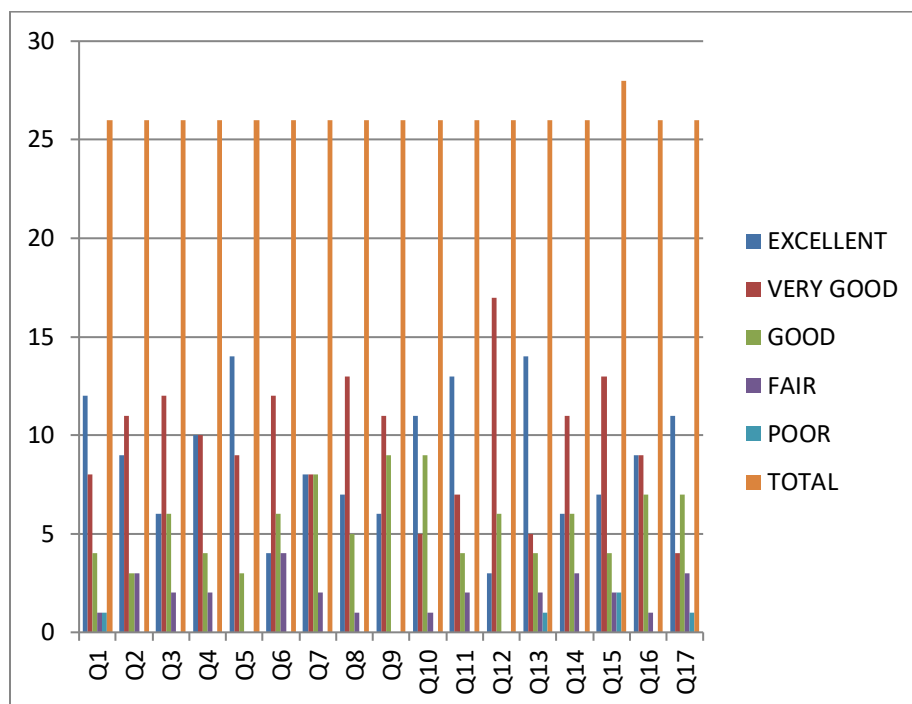
	QI	QJ	QK	QL	QM	QN	QO	QP	QQ	QR	QS	QT	QU	QV	QW	QX	QY
EXCELLENT	27	20	25	33	22	16	20	21	25	23	19	15	28	21	29	23	18
VERY GOOD	32	30	32	28	31	28	26	23	34	27	19	21	23	23	24	25	23
GOOD	33	40	35	30	36	46	36	45	34	37	38	44	40	34	36	36	43
FAIR	8	9	7	8	10	7	13	7	6	9	10	13	8	14	10	12	12
POOR	1	1	1	1	1	4	5	4	1	4	8	6	1	8	1	4	4
BLANK	6	7	7	7	7	6	7	7	7	7	13	8	7	7	7	7	7
	107	107	107	107	107	107	107	107	107	107	107	107	107	107	107	107	107



FEEDBACK ANALYSIS FACULTY 2023-24

Faculty Feed Back Analysis

RANGE	Q1	Q2	Q3	Q4	Q5	Q6	Q7	Q8	Q9	Q10	Q11	Q12	Q13	Q14	Q15	Q16	Q17
EXCELLENT	12	9	6	10	14	4	8	7	6	11	13	3	14	6	7	9	11
VERY GOOD	8	11	12	10	9	12	8	13	11	5	7	17	5	11	13	9	4
GOOD	4	3	6	4	3	6	8	5	9	9	4	6	4	6	4	7	7
FAIR	1	3	2	2	0	4	2	1	0	1	2	0	2	3	2	1	3
POOR	1	0	0	0	0	0	0	0	0	0	0	0	1	0	2	0	1
TOTAL	26	26	26	26	26	26	26	26	26	26	26	26	26	26	28	26	26





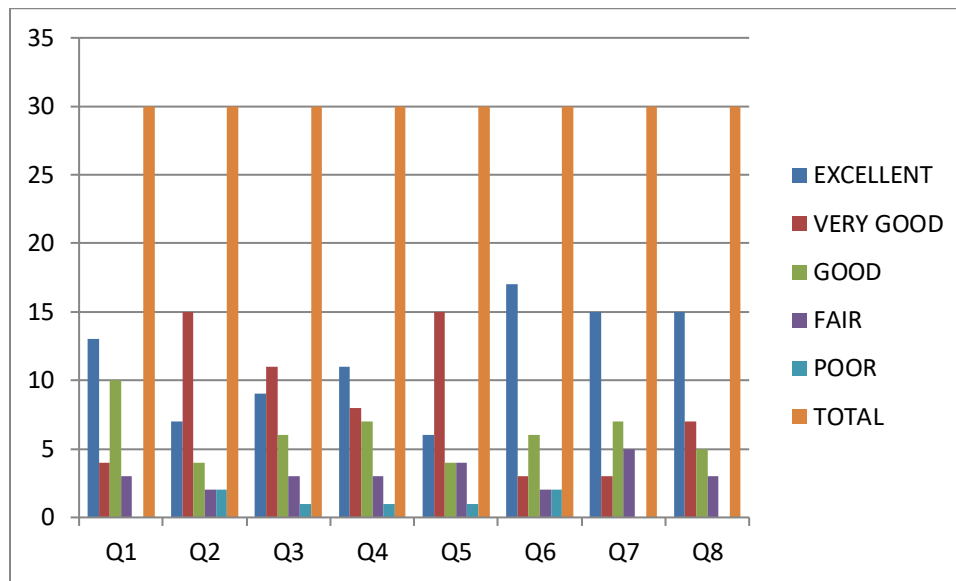
IET BHADDAL

**TECHNICAL
CAMPUS
ROPAR**

Campus: Bhaddal, PO Mianpur, Distt. Ropar, Punjab-140108 (India)
UGC approved (2f & 12B) | Affiliated to IKG-PTU (Jalandhar)

FEEDBACK ANALYSIS ALUMINI 2023-24

RANGE	Q1	Q2	Q3	Q4	Q5	Q6	Q7	Q8
EXCELLENT	13	7	9	11	6	17	15	15
VERY GOOD	4	15	11	8	15	3	3	7
GOOD	10	4	6	7	4	6	7	5
FAIR	3	2	3	3	4	2	5	3
POOR	0	2	1	1	1	2	0	0
TOTAL	30	30	30	30	30	30	30	30



FEEDBACK ANALYSIS EMPLOYER 2023-24

RANGE	Q1	Q2	Q3	Q4	Q5	Q6	Q7	Q8
EXCELLENT	1	0	1	0	0	3	2	4
VERY GOOD	3	2	1	1	0	0	2	0
GOOD	0	2	2	3	4	1	0	0
FAIR	0	0	0	0	0	0	0	0
POOR	0	0	0	0	0	0	0	0
TOTAL	4	4	4	4	4	4	4	4

